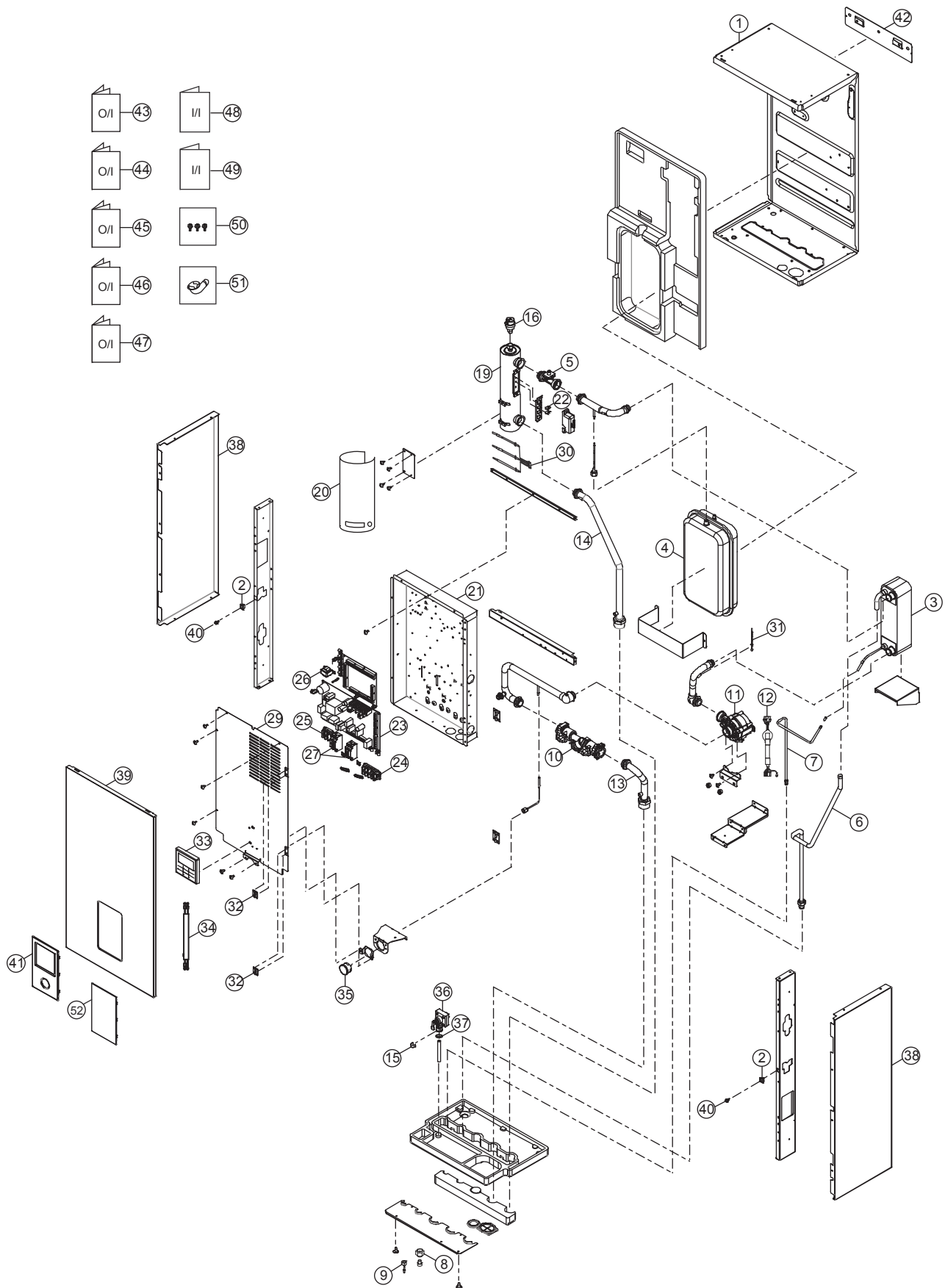


20. Exploded View and Replacement Parts List

20.1 Indoor Unit



Note:
 The above exploded view is for the purpose of parts disassembly and replacement.
 The non-numbered parts are not kept as standard service parts.

<Model: WH-SDC03H3E5-1 WH-SDC05H3E5-1>

SAFETY	REF. NO.	DESCRIPTION & NAME	QTY.	WH-SDC03H3E5-1	WH-SDC05H3E5-1	REMARK
	1	BASE PAN	1	CWD521450	←	
	2	CATCHER	2	CWH601011	←	
	3	HOT WATER COIL-COMplete	1	ACXB90C00320	←	
	4	RECEIVER	1	CWB141073	←	
	5	FLOW SENSOR	1	CWB621137	←	O
	6	TUBE CONNECTOR-COMplete (1)	1	CWT01C7219	←	
	7	TUBE CONNECTOR-COMplete (2)	1	CWT01C7220	←	
	8	FLARE NUT (7/8)	1	CWT251032	←	
	9	FLARE NUT (5/8)	1	CWT251063	←	
	10	FILTER COMPLETE	1	CWB51C1021	←	
⚠	11	WATER PUMP	1	CWB532116	←	
⚠	12	LEADWIRE (WATER PUMP TO PCB)	1	ACXA60C03450	←	
	13	TUBE CONNECTOR-COMplete (3)	1	CWT01C7166	←	
	14	TUBE CONNECTOR-COMplete (4)	1	CWT01C7168	←	
	15	RETAINING RING D:22mm	1	CWH581007	←	
	16	AIR PURGE VALVE	1	ACXB62-00130	←	O
⚠	19	HEATER ASS'Y	1	ACXA34K00070	←	
	20	SOUND PROOF MATERIAL	1	ACXG30-00680	←	
	21	CONTROL BOARD	1	CWH102629	←	
	22	THERMOSTAT	2	CWA151074	←	O
⚠	23	ELECTRONIC CONTROLLER-MAIN	1	ACXA73C11870	ACXA73C11880	O
⚠	24	TERMINAL BOARD ASS'Y (1,2,3)	1	CWA28K1217	←	O
⚠	25	TERMINAL BOARD ASS'Y (A,B)	1	CWA28K1238	←	O
⚠	26	REACTOR	1	G0C103Z00003	←	O
⚠	27	RESIDUAL CURRENT CIRCUIT BREAKER	2	K5KYAY00003	←	O
	29	CONTROL BOARD COVER	1	CWH131692	←	
	30	SENSOR-COMP. (WATER IN,OUT & REF TEMP CN-TH1)	1	CWA50C3377	←	O
	31	SENSOR-COMP. (HEX WATER OUTLET TEMP CN-TH3)	1	CWA50C3378	←	O
	32	HINGE	2	CWH611007	←	
	33	REMOTE CONTROL COMPLETE	1	CWA75C4682	←	O
	34	LEADWIRE REMOTE CONTROL 700mm	1	CWA68C2284	←	
	35	PRESSURE GAUGE	1	CWB070003	←	O
	36	PRESSURE RELIEF VALVE	1	CWB621136	←	O
	37	PACKING	2	CWB811195	←	
	38	CABINET SIDE PLATE	2	CWE041850A	←	
	39	CABINET FRONT PLATE	1	CWE061396A	←	
	40	LOCK	2	CWH891004	←	
	41	DECORATION BASE ASS'Y	1	CWE35K1285	←	
	42	INSTALLING HOLDER	1	CWH361103A	←	
	43	OPERATING INSTRUCTION	1	ACXF55-05410	←	

SAFETY	REF. NO.	DESCRIPTION & NAME	QTY.	WH-SDC03H3E5-1	WH-SDC05H3E5-1	REMARK
	44	OPERATING INSTRUCTION	1	ACXF55-05420	←	
	45	OPERATING INSTRUCTION	1	ACXF55-05430	←	
	46	OPERATING INSTRUCTION	1	ACXF55-05440	←	
	47	OPERATING INSTRUCTION	1	ACXF55-05450	←	
	48	INSTALLATION INSTRUCTION	1	CWF616851	←	
	49	INSTALLATION INSTRUCTION	1	CWF616540	←	
	50	ACCERSORY-COMPLETE (SCREW)	1	CWH82C1754	←	
	51	ACCESSORY-COMPLETE (L-TUBE)	1	CWG87C900	←	
	52	ACCESSORY-CO.(DECORATION BASE)	1	CWH82C2174	←	

Note:

- All parts are supplied from PAPAMY, Malaysia (Vendor Code: 00029488).
- "O" marked parts are recommended to be kept in stock.

<Model: WH-SDC07H3E5-1 WH-SDC09H3E5-1>

SAFETY	REF. NO.	DESCRIPTION & NAME	QTY.	WH-SDC07H3E5-1	WH-SDC09H3E5-1	REMARK
	1	BASE PAN	1	CWD521450	←	
	2	CATCHER	2	CWH601011	←	
	3	HOT WATER COIL-COMplete	1	ACXB90C00320	←	
	4	RECEIVER	1	CWB141073	←	
	5	FLOW SENSOR	1	CWB621137	←	O
	6	TUBE CONNECTOR-COMplete (1)	1	CWT01C7219	←	
	7	TUBE CONNECTOR-COMplete (2)	1	CWT01C7259	←	
	8	FLARE NUT (7/8)	1	CWT251064	←	
	9	FLARE NUT (5/8)	1	CWT251063	←	
	10	FILTER COMPLETE	1	CWB51C1021	←	
⚠	11	WATER PUMP	1	CWB532116	←	
⚠	12	LEADWIRE (WATER PUMP TO PCB)	1	ACXA60C03450	←	
	13	TUBE CONNECTOR-COMplete (3)	1	CWT01C7166	←	
	14	TUBE CONNECTOR-COMplete (4)	1	CWT01C7168	←	
	15	RETAINING RING D:22mm	1	CWH581007	←	
	16	AIR PURGE VALVE	1	ACXB62-00130	←	O
⚠	19	HEATER ASS'Y	1	ACXA34K00070	←	
	20	SOUND PROOF MATERIAL	1	ACXG30-00680	←	
	21	CONTROL BOARD	1	CWH102629	←	
	22	THERMOSTAT	2	CWA151074	←	O
⚠	23	ELECTRONIC CONTROLLER-MAIN	1	ACXA73C11890	ACXA73C11900	O
⚠	24	TERMINAL BOARD ASS'Y (1,2,3)	1	CWA28K1217	←	O
⚠	25	TERMINAL BOARD ASS'Y (A,B)	1	CWA28K1238	←	O
⚠	26	REACTOR	1	G0C103Z00003	←	O
⚠	27	RESIDUAL CURRENT CIRCUIT BREAKER	2	K5KYAY00003	←	O
	29	CONTROL BOARD COVER	1	CWH131692	←	
	30	SENSOR-COMP. (WATER IN,OUT &REF TEMP CN-TH1)	1	CWA50C3377	←	O
	31	SENSOR-COMP. (HEX WATER OUTLET TEMP CN-TH3)	1	CWA50C3378	←	O
	32	HINGE	2	CWH611007	←	
	33	REMOTE CONTROL COMPLETE	1	CWA75C4682	←	O
	34	LEADWIRE REMOTE CONTROL 700mm	1	CWA68C2284	←	
	35	PRESSURE GAUGE	1	CWB070003	←	O
	36	PRESSURE RELIEF VALVE	1	CWB621136	←	O
	37	PACKING	2	CWB811195	←	
	38	CABINET SIDE PLATE	2	CWE041850A	←	
	39	CABINET FRONT PLATE	1	CWE061396A	←	
	40	LOCK	2	CWH891004	←	
	41	DECORATION BASE ASS'Y	1	CWE35K1285	←	
	42	INSTALLING HOLDER	1	CWH361103A	←	
	43	OPERATING INSTRUCTION	1	ACXF55-05410	←	

SAFETY	REF. NO.	DESCRIPTION & NAME	QTY.	WH-SDC07H3E5-1	WH-SDC09H3E5-1	REMARK
	44	OPERATING INSTRUCTION	1	ACXF55-05420	←	
	45	OPERATING INSTRUCTION	1	ACXF55-05430	←	
	46	OPERATING INSTRUCTION	1	ACXF55-05440	←	
	47	OPERATING INSTRUCTION	1	ACXF55-05450	←	
	48	INSTALLATION INSTRUCTION	1	ACXF60-01810	←	
	49	INSTALLATION INSTRUCTION	1	CWF616540	←	
	50	ACCERSSORY-COMPLETE (SCREW)	1	CWH82C1754	←	
	51	ACCESSORY-COMPLETE (L-TUBE)	1	CWG87C900	←	
	52	ACCESSORY-CO.(DECORATION BASE)	1	CWH82C2174	←	

Note:

- All parts are supplied from PAPAMY, Malaysia (Vendor Code: 00029488).
“O” marked parts are recommended to be kept in stock.