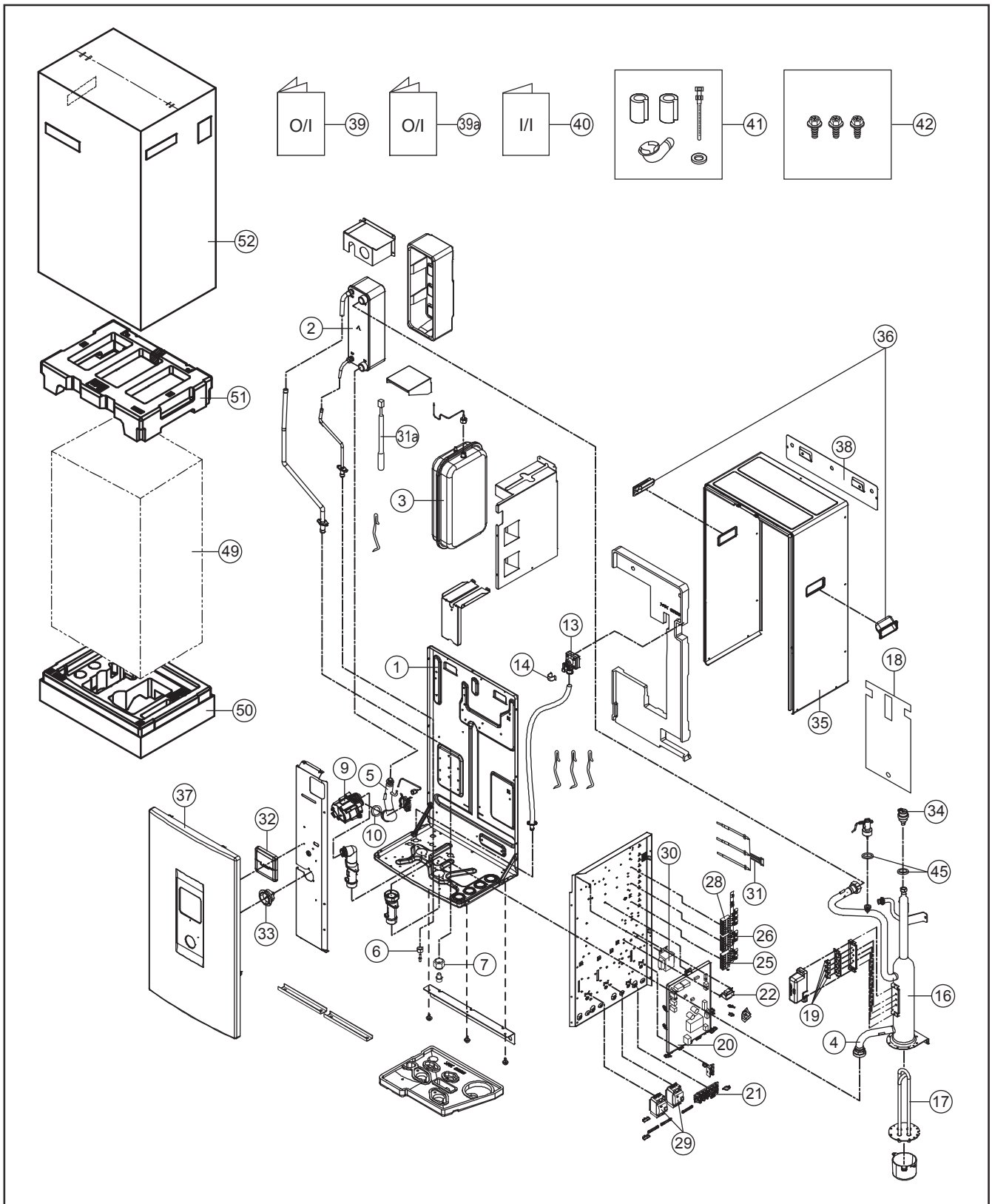


19. Exploded View and Replacement Parts List

19.1 Indoor Unit



Note:

- The above exploded view is for the purpose of parts disassembly and replacement.
- The non-numbered parts are not kept as standard service parts.

<Model: WH-SDC07F3E5 WH-SDC09F3E5>

SAFETY	REF. NO.	DESCRIPTION & NAME	QTY.	WH-SDC07F3E5	WH-SDC09F3E5	REMARK
	1	BASE PAN	1	CWD521279	←	
	2	HOT WATER COIL - COMPLETE	1	CWB90C1090	←	
	3	RECEIVER	1	CWB141039	←	
	4	TUBE ASS'Y (1)	1	CWT030011	←	
	5	TUBE ASS'Y (2)	1	CWT030012	←	
	6	FLARE NUT (7/6)	1	CWT251063	←	
	7	FLARE NUT (7/8)	1	CWT251064	←	
	9	WATER PUMP	1	CWB532116	←	
	10	PACKING (O-RING) I.D 32mm	2	CWB811082	←	
	13	PRESSURE RELIEF VALVE	1	CWB621092	←	O
	14	RETAINING RING D:22mm	2	CWH581007	←	
	16	BOTTLE COMPLETE	1	CWH90C0051	←	
	17	HEATER ASS'Y	1	CWA34K1026	←	
	18	SOUND PROOF MATERIAL	1	CWG302835	←	
	19	THERMOSTAT	2	CWA151074	←	O
⚠	20	ELECTRONIC CONTROLLER - MAIN	1	CWA73C8536	CWA73C8537	O
⚠	21	TERMINAL BOARD ASS'Y (TO OUTDOOR)	1	CWA28K1217	←	O
⚠	22	REACTOR	1	G0C103Z00003	←	O
⚠	25	TERMINAL BOARD ASS'Y (2,3 WAY VALVE)	1	CWA28K1229	←	O
⚠	26	TERMINAL BOARD ASS'Y (HEATER & THERMOSTAT)	1	CWA28K1230	←	O
⚠	28	TERMINAL BOARD ASS'Y (TANK & EXTERNAL CONTROL)	1	CWA28K1231	←	O
	29	RESIDUAL CURRENT CIRCUIT BREAKER	2	K5KYAY00003	←	O
	30	TRANSFORMER - COMPLETE	1	CWA40C1096	←	O
	31	SENSOR - COMPLETE (WATER IN OUT & REF)	1	CWA50C2762	←	O
	31a	SENSOR - COMPLETE (HEX WATER TEMP)	1	CWA50C3164	←	O
⚠	32	REMOTE CONTROL COMPLETE	1	CWA75C4464	←	O
	33	PRESSURE GAUGE	1	CWB070001	←	
	34	AIR PURGE VALVE	1	CWB621094	←	
	35	CABINET	1	CWE001050A	←	
	36	HANDLE	2	CWE161008	←	
	37	CABINET FRONT PLATE	1	CWE061265A	←	
	38	INSTALLING HOLDER	1	CWH361103A	←	
	39	OPERATING INSTRUCTION (EN,DE,NE,IT,GR,FR,ES,PO,BU)	1	CWF569382	←	
	39a	OPERATING INSTRUCTION (SW,NO,DA,FI)	1	CWF569383	←	
	40	INSTALLATION INSTRUCTION	1	CWF616473	←	
	41	ACCESSORY - COMPLETE (L-TUBE)	1	CWH82C1763	←	
	42	ACCESSORY - COMPLETE	1	CWH82C1754	←	

Note:

- All parts are supplied from PAPAMY, Malaysia (Vendor Code: 00029488).
- "O" marked parts are recommended to be kept in stock.