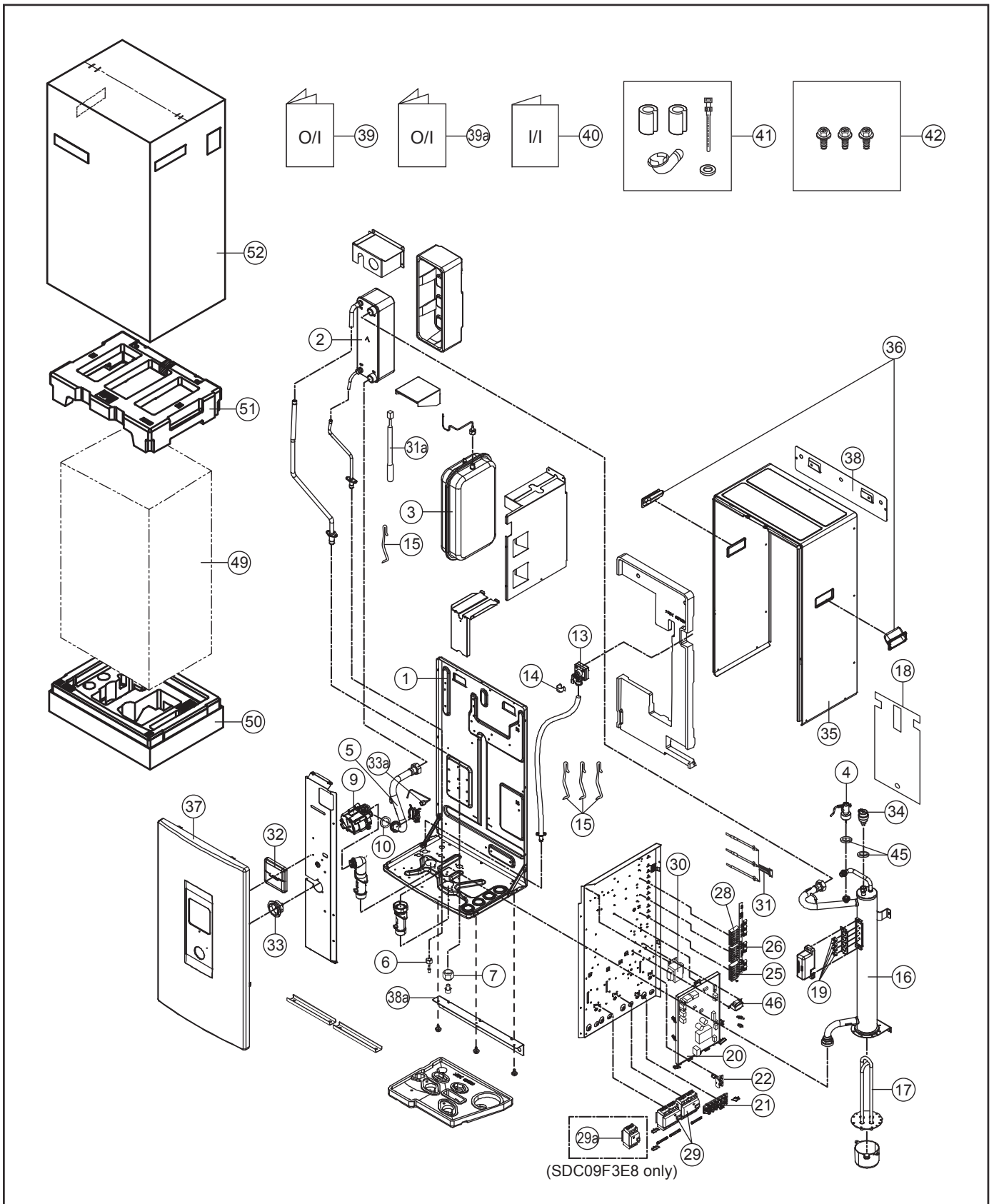


## 20. Exploded View and Replacement Parts List

### 20.1 Indoor Unit



**Note:**

- The above exploded view is for the purpose of parts disassembly and replacement.
- The non-numbered parts are not kept as standard service parts.

<Model: WH-SDC09F3E8 WH-SDC12F9E8>

SAFETY	REF. NO.	DESCRIPTION & NAME	QTY.	WH-SDC09F3E8	WH-SDC12F9E8	REMARK
	1	BASE PAN	1	CWD521279	←	
	2	HOT WATER COIL - COMPLETE	1	CWB90C1109	←	
	3	RECEIVER	1	CWB141039	←	
	4	FLOW SWITCH VALVE	1	CWB621128	←	O
	5	TUBE CONNECTOR - COMPLETE	1	CWT029525	←	
	6	FLARE NUT (5/8) - REFRIGERANT	1	CWT251061	←	
	7	FLARE NUT (3/8) - LIQUID	1	CWT251064	←	
	9	WATER PUMP	1	CWB532116	←	O
	10	PACKING (O-RING) I.D 32mm	1	CWB811082	←	
	13	PRESSURE RELIEF VALVE	1	CWB621092	←	O
	14	RETAINING RING D:22mm	1	CWH581007	←	
	15	CLIP SENSOR	4	CWH32138	←	
	16	BOTTLE COMPLETE	1	CWH90C0044	CWH90C0045	
	17	HEATER ASS'Y	1	CWA34K1042	CWA34K1030	
	18	SOUND PROOF MATERIAL	1	CWG302835	CWG302853	O
	19	THERMOSTAT	4	CWA151074	←	O
⚠	20	ELECTRONIC CONTROLLER - MAIN	1	CWA73C8545	CWA73C8544	O
⚠	21	TERMINAL BOARD ASS'Y (TO OUTDOOR)	1	CWA28K1240	←	O
⚠	22	TERMINAL BOARD ASS'Y (HEATER)	1	CWA28K1236	←	O
⚠	25	TERMINAL BOARD ASS'Y (TO 2,3 WAY VALVE)	1	CWA28K1229	←	O
⚠	26	TERMINAL BOARD ASS'Y (TO BOOSTER HEATER & ROOM THERMOSTAT)	1	CWA28K1230	←	O
⚠	28	TERMINAL BOARD ASS'Y (TO TANK)	1	CWA28K1231	←	O
	29	CIRCUIT BREAKER	1	CWA181008	←	O
	29a	CIRCUIT BREAKER	1	K5KYYAY00003	-	O
	30	TRANSFORMER - COMPLETE	1	CWA40C1096	←	O
	31	SENSOR - COMPLETE (CN-TH1)	1	CWA50C2762	←	O
	31a	SENSOR - COMPLETE (CN-TH3)	1	CWA50C3164	←	O
⚠	32	REMOTE CONTROL COMPLETE	1	CWA75C4464	←	O
	33	PRESSURE GAUGE	1	CWB070001	←	O
	33a	FLARE NUT (1/4)	1	CWT251063	←	
	34	AIR PURGE VALVE	1	CWB621094	←	O
	35	CABINET	1	CWE001050A	←	
	36	HANDLE	2	CWE161008	←	
	37	CABINET FRONT PLATE	1	CWE061265A	←	
	38	INSTALLING HOLDER	1	CWH361103A	←	
	38a	INSTALLING HOLDER	1	CWH361119A	←	
	39	OPERATING INSTRUCTION	1	CWF569382	←	
	39a	OPERATING INSTRUCTION	1	CWF569383	←	
	40	INSTALLATION INSTRUCTION	1	CWF616149	←	
	41	ACCESSORY - COMPLETE (L-TUBE)	1	CWH82C1763	←	
	42	ACCESSORY - COMPLETE	1	CWH82C1754	←	
	45	PACKING (O-RING) I.D 2.8mm	2	CWB811190	←	
⚠	46	REACTOR	1	G0C103Z00003	←	O
	49	BAG	1	CWG861447	←	
	50	BASE BOARD - COMPLETE	1	CWG62C1124	←	
	51	SHOCK ABSORBER	1	CWG713189	←	
	52	C.C.CASE	1	CWG568364	←	

**Note:**

- All parts are supplied from PAPAMY, Malaysia (Vendor Code: 00029488).
- "O" marked parts are recommended to be kept in stock.

<Model: WH-SDC14F9E8 WH-SDC16F9E8>

SAFETY	REF. NO.	DESCRIPTION & NAME	QTY.	WH-SDC14F9E8	WH-SDC16F9E8	REMARK
	1	BASE PAN	1	CWD521279	←	
	2	HOT WATER COIL - COMPLETE	1	CWB90C1110	←	
	3	RECEIVER	1	CWB141039	←	
	4	FLOW SWITCH VALVE	1	CWB621128	←	O
	5	TUBE CONNECTOR - COMPLETE	1	CWT029525	←	
	6	FLARE NUT (5/8) - REFRIGERANT	1	CWT251061	←	
	7	FLARE NUT (7/8) - LIQUID	1	CWT251064	←	
	9	WATER PUMP	1	CWB532116	←	O
	10	PACKING (O-RING) I.D 32mm	1	CWB811082	←	
	13	PRESSURE RELIEF VALVE	1	CWB621092	←	O
	14	RETAINING RING D:22mm	1	CWH581007	←	
	15	CLIP SENSOR	4	CWH32138	←	
	16	BOTTLE COMPLETE	1	CWH90C0045	←	
	17	HEATER ASS'Y	1	CWA34K1030	←	
	18	SOUND PROOF MATERIAL	1	CWG302853	←	O
	19	THERMOSTAT	4	CWA151074	←	O
⚠	20	ELECTRONIC CONTROLLER - MAIN	1	CWA73C8543	CWA73C8542	O
⚠	21	TERMINAL BOARD ASS'Y (TO OUTDOOR)	1	CWA28K1240	←	O
⚠	22	TERMINAL BOARD ASS'Y (TO HEATER)	1	CWA28K1236	←	O
⚠	25	TERMINAL BOARD ASS'Y (TO 2,3 WAY VALVE)	1	CWA28K1229	←	O
⚠	26	TERMINAL BOARD ASS'Y (TO BOOSTER HEATER & ROOM THERMOSTAT)	1	CWA28K1230	←	O
⚠	28	TERMINAL BOARD ASS'Y (TO TANK)	1	CWA28K1231	←	O
	29	CIRCUIT BREAKER	2	CWA181008	←	O
	30	TRANSFORMER - COMPLETE	1	CWA40C1096	←	O
	31	SENSOR - COMPLETE (CN-TH1)	1	CWA50C2762	←	O
	31a	SENSOR - COMPLETE (CN-TH3)	1	CWA50C3164	←	O
⚠	32	REMOTE CONTROL COMPLETE	1	CWA75C4464	←	O
	33	PRESSURE GAUGE	1	CWB070001	←	O
	33a	FLARE NUT (1/4)	1	CWT251063	←	
	34	AIR PURGE VALVE	1	CWB621094	←	O
	35	CABINET	1	CWE001050A	←	
	36	HANDLE	2	CWE161008	←	
	37	CABINET FRONT PLATE	1	CWE061265A	←	
	38	INSTALLING HOLDER	1	CWH361103A	←	
	38a	INSTALLING HOLDER	1	CWH361119A	←	
	39	OPERATING INSTRUCTION	1	CWF569382	←	
	39a	OPERATING INSTRUCTION	1	CWF569383	←	
	40	INSTALLATION INSTRUCTION	1	CWF616506	←	
	41	ACCESSORY - COMPLETE (L-TUBE)	1	CWH82C1763	←	
	42	ACCESSORY - COMPLETE	1	CWH82C1754	←	
	45	PACKING (O-RING) I.D 2.8mm	2	CWB811190	←	
⚠	46	REACTOR	1	G0C103Z00003	←	O
	49	BAG	1	CWG861447	←	
	50	BASE BOARD - COMPLETE	1	CWG62C1124	←	
	51	SHOCK ABSORBER	1	CWG713189	←	
	52	C.C.CASE	1	CWG568364	←	

**Note:**

- All parts are supplied from PAPAMY, Malaysia (Vendor Code: 00029488).
- "O" marked parts are recommended to be kept in stock.