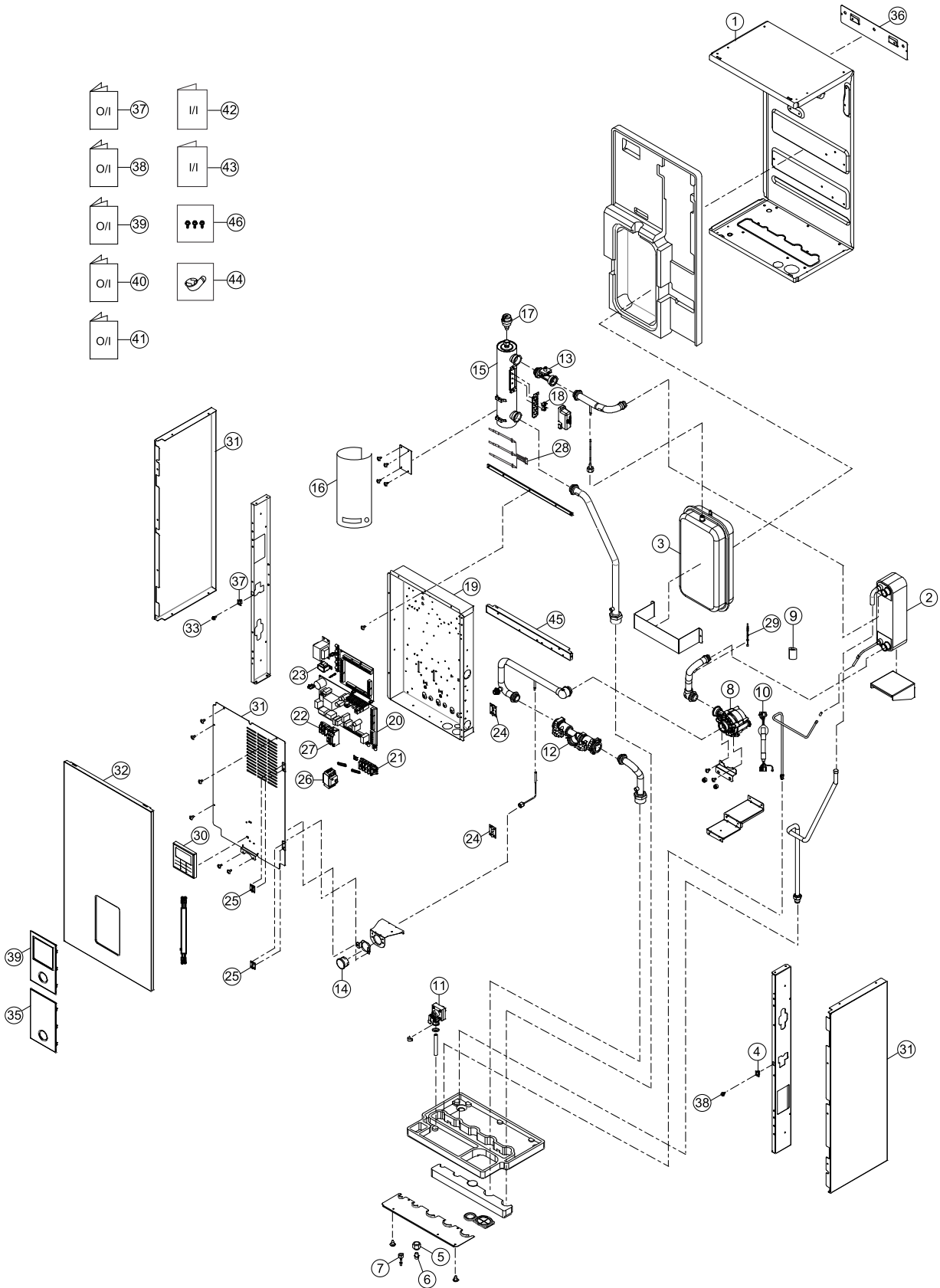


19. Exploded View and Replacement Parts List

19.1 Indoor Unit



Note:

- The above exploded view is for the purpose of parts disassembly and replacement.
- The non-numbered parts are not kept as standard service parts.

<Model: WH-SDC12H9E8 WH-SDC16H9E8>

SAFETY	REF. NO.	DESCRIPTION & NAME	QTY.	WH-SDC12H9E8	WH-SDC16H9E8	REMARK
	1	BASE PAN	1	CWD521450	←	
	2	HOT WATER COIL - COMPLETE	1	ACXB90C00220	ACXB90C00250	
	3	RECEIVER	1	CWB141039	←	
	4	CATCHER	2	CWH601011	←	
	5	FLARE NUT (5/8)	1	CWT251064	←	
	6	FLARE NUT	1	CWT251061	←	
	7	FLARE NUT (1/4)	1	CWT251063	←	
	8	WATER PUMP	1	CWB532116	←	O
	9	FERRITE CORE	1	CWA431122	←	
	10	LEAD WIRE - FOR PUMP	1	ACXA60C06140	←	O
	11	PRESSURE RELIEF VALVE	1	CWB621136	←	O
	12	FILTER COMPLETE	1	CWB51C1021	←	
	13	FLOW SENSOR	1	CWB621137	←	O
	14	PRESSURE GAUGE	1	CWB070003	←	
	15	HEATER ASS'Y	1	ACXA34K00090	←	O
	16	SOUND PROOF MATERIAL	1	ACXG30-00680	←	
	17	AIR PURGE VALVE	1	ACXB62-00130	←	O
	18	THERMOSTAT	4	CWA151074	←	O
	19	CONTROL BOARD	1	CWH102629	←	
⚠	20	ELECTRONIC CONTROLLER - MAIN	1	ACXA73C11520	ACXA73C11530	O
⚠	21	TERMINAL BOARD ASS'Y (1 TO 5)	1	CWA28K1240	←	O
⚠	22	TERMINAL BOARD ASS'Y (A, B)	1	CWA28K1238	←	O
⚠	23	REACTOR	1	G0C103Z00003	←	O
	24	HINGE	2	CWH611006	←	
	25	HINGE	2	CWH611007	←	
⚠	26	RESIDUAL CURRENT CIRCUIT BREAKER	2	CWA181008	←	O
	28	SENSOR - CO. (WATER IN, OUT REF TEMP)	1	CWA50C3377	←	O
	29	SENSOR - CO. (HEX WATER OUTLET)	1	CWA50C3378	←	O
⚠	30	REMOTE CONTROL COMPLETE	1	CWA75C4681	←	O
	31	CABINET SIDE PLATE	2	CWE041850A	←	
	32	CABINET FRONT PLATE	1	CWE061396A	←	
	33	LOCK	2	CWH891004	←	
	34	DECORATION BASE ASS'Y	1	CWE35K1285	←	
	35	ACCESSORY - COMPLETE	1	CWH82C2174	←	
	36	INSTALLING HOLDER	1	CWH361103A	←	
	37	OPERATING INSTRUCTION	1	ACXF55-02060	←	
	38	OPERATING INSTRUCTION	1	ACXF55-02070	←	
	39	OPERATING INSTRUCTION	1	ACXF55-02090	←	
	40	OPERATING INSTRUCTION	1	ACXF55-02100	←	
	41	OPERATING INSTRUCTION	1	ACXF55-02110	←	
	42	INSTALLATION INSTRUCTION	1	ACXF60-03130	←	
	43	INSTALLATION INSTRUCTION	1	ACXF60-03260	←	
	44	BAG - COMPLETE (FLEXIBLE PIPE)	1	CWG87C900	←	
	45	INSTALLING HOLDER	1	CWH361119A	←	
	46	ACCESSORY - COMPLETE	1	CWH82C1754	←	

Note:

- All parts are supplied from PAPAMY, Malaysia (Vendor Code: 00029488).
- "O" marked parts are recommended to be kept in stock.