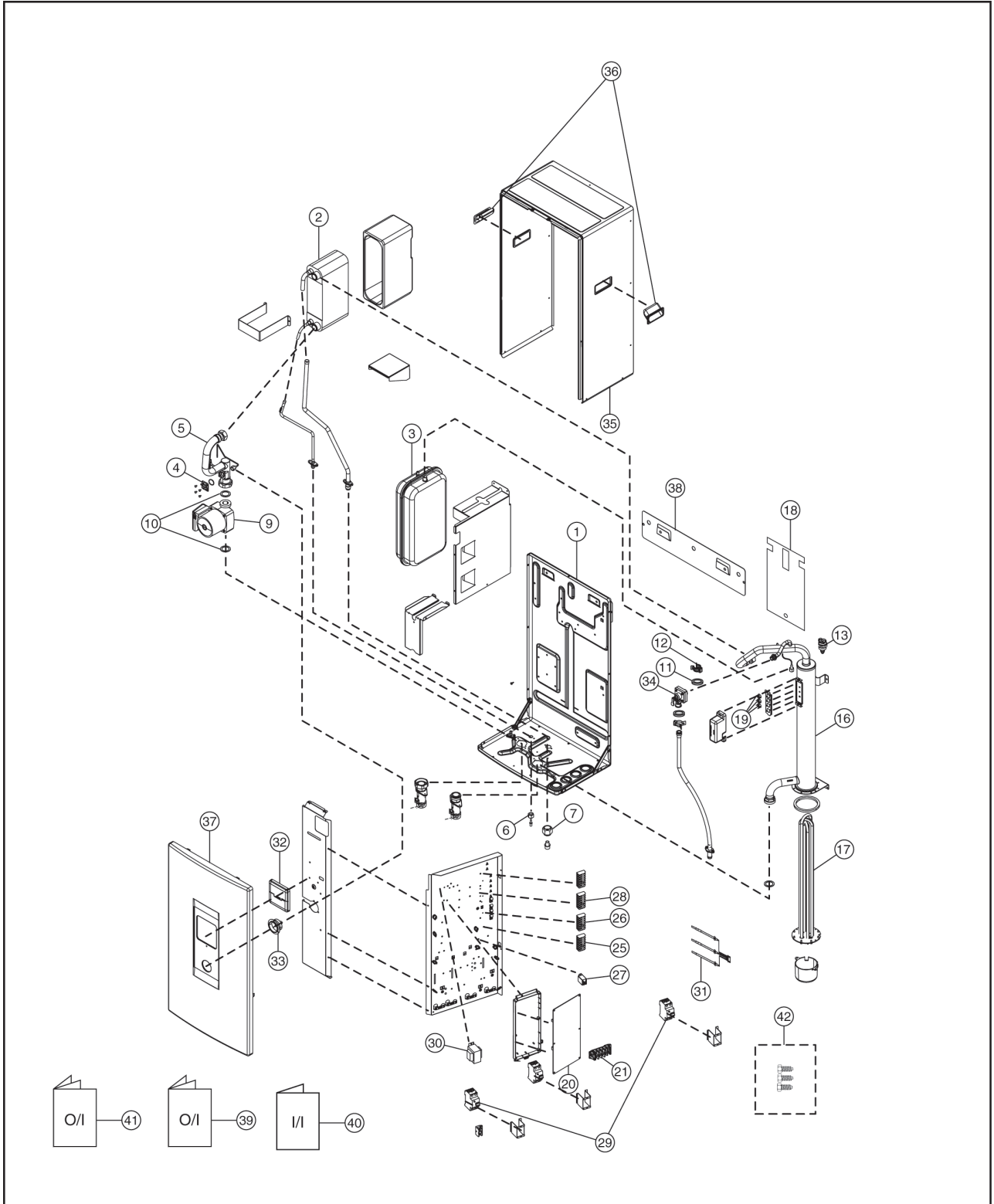


## 20. Exploded View and Replacement Parts List

20.1 WH-SDF07C3E5 WH-SDF09C3E5 WH-SDF12C6E5  
WH-SDF14C6E5 WH-SDF16C6E5  
(WH-SDF07C3E5-1 WH-SDF09C3E5-1 WH-SDF12C6E5-1  
WH-SDF14C6E5-1 WH-SDF16C6E5-1)



### Note:

- The above exploded view is for the purpose of parts disassembly and replacement.
- The non-numbered parts are not kept as standard service parts.

<Model: WH-SDF07C3E5 WH-SDF09C3E5 WH-SDF12C6E5 WH-SDF14C6E5 WH-SDF16C6E5  
(WH-SDF07C3E5-1 WH-SDF09C3E5-1 WH-SDF12C6E5-1 WH-SDF14C6E5-1 WH-SDF16C6E5-1)>

REF. NO.	DESCRIPTION & NAME	QTY.	WH-SDF07C3E5 (WH-SDF07C3E5-1)	WH-SDF09C3E5 (WH-SDF09C3E5-1)	WH-SDF12C6E5 (WH-SDF12C6E5-1)	WH-SDF14C6E5 (WH-SDF14C6E5-1)	WH-SDF16C6E5 (WH-SDF16C6E5-1)	REMARK
1	BASE PAN	1	CWD521266	←	←	←	←	
2	HOT WATER COIL-COMplete	1	CWB90C1090	←	CWB90C1088	←	←	
3	RECEIVER	1	CWB141039	←	←	←	←	
4	FLOAT (FLOW SWITCH)	1	CWB601008	←	←	←	←	
5	TUBE CONNECTOR-COMplete	1	CWT29C1048	←	CWT29C1043	←	←	
6	FLARE NUT (1/4) (3/8)	1	CWT251064	←	←	←	←	
7	FLARE NUT (5/8)	1	CWT251063	←	←	←	←	
9	PUMP	1	CWB532075	←	CWB532096	←	←	O
10	PACKING (O-RING) I.D 32mm	2	CWB811082	←	←	←	←	
11	PACKING (O-RING) I.D 13.8mm	2	CWB811022	←	←	←	←	
12	RETAINING RING D:22mm	2	CWH581007	←	←	←	←	
13	VALVE BODY (AIR TO WATER)	1	CWB621094	←	←	←	←	
16	BOTTLE COMPLETE	1	CWH90C0030	←	CWH90C0028	←	←	
17	HEATER ASS'Y	1	CWA34K1014	←	CWA34K1020	←	←	
18	SOUND PROOF MATERIAL	1	CWG302595	←	CWG302702	←	←	
19	THERMOSTAT	2	CWA151065	←	←	←	←	O
20	ELECTRONIC CONTROLLER-MAIN	1	CWA73C6703	CWA73C6704	CWA73C6705	CWA73C6706	CWA73C6707	O
21	TERMINAL BOARD ASS'Y	1	CWA28K1217	←	←	←	←	O
25	TERMINAL BOARD ASS'Y	1	CWA28K1229	←	←	←	←	O
26	TERMINAL BOARD ASS'Y	1	CWA28K1230	←	←	←	←	O
27	ELECTRO MAGNETIC SWITCH	1	K6C1AYY00004	←	←	←	←	O
28	TERMINAL BOARD ASS'Y	1	CWA28K1231	←	←	←	←	O
29	RESIDUAL CURRENT CIRCUIT BREAKER	2	K5KYYAY00003	←	←	←	←	O
30	TRANSFORMER-COMplete	1	CWA40C1096	←	←	←	←	O
31	SENSOR-COMplete	1	CWA50C2762	←	←	←	←	O
32	REMOTE CONTROL COMPLETE	1	CWA75C4022	←	←	←	←	O
33	PRESSURE GAUGE	1	CWB070001	←	←	←	←	
34	VALVE BODY (AIR TO WATER)	1	CWB621092	←	←	←	←	
35	CABINET	1	CWE001050A	←	←	←	←	
36	HANDLE	2	CWE161008	←	←	←	←	
37	CABINET FRONT PLATE	1	CWE061265A	←	←	←	←	
38	INSTALLING HOLDER	1	CWH361103A	←	←	←	←	
39	OPERATING INSTRUCTION	1	CWF568556	←	←	←	←	
40	INSTALLATION INSTRUCTION	1	CWF615369	←	CWF615368	←	←	
41	OPERATING INSTRUCTION	1	CWF568681	←	←	←	←	
42	ACCESSORY-COMplete	1	CWH82C1754	←	←	←	←	

(Note)

- All parts are supplied from PAPAMY, Malaysia (Vendor Code: 00029488).
- "O" marked parts are recommended to be kept in stock.