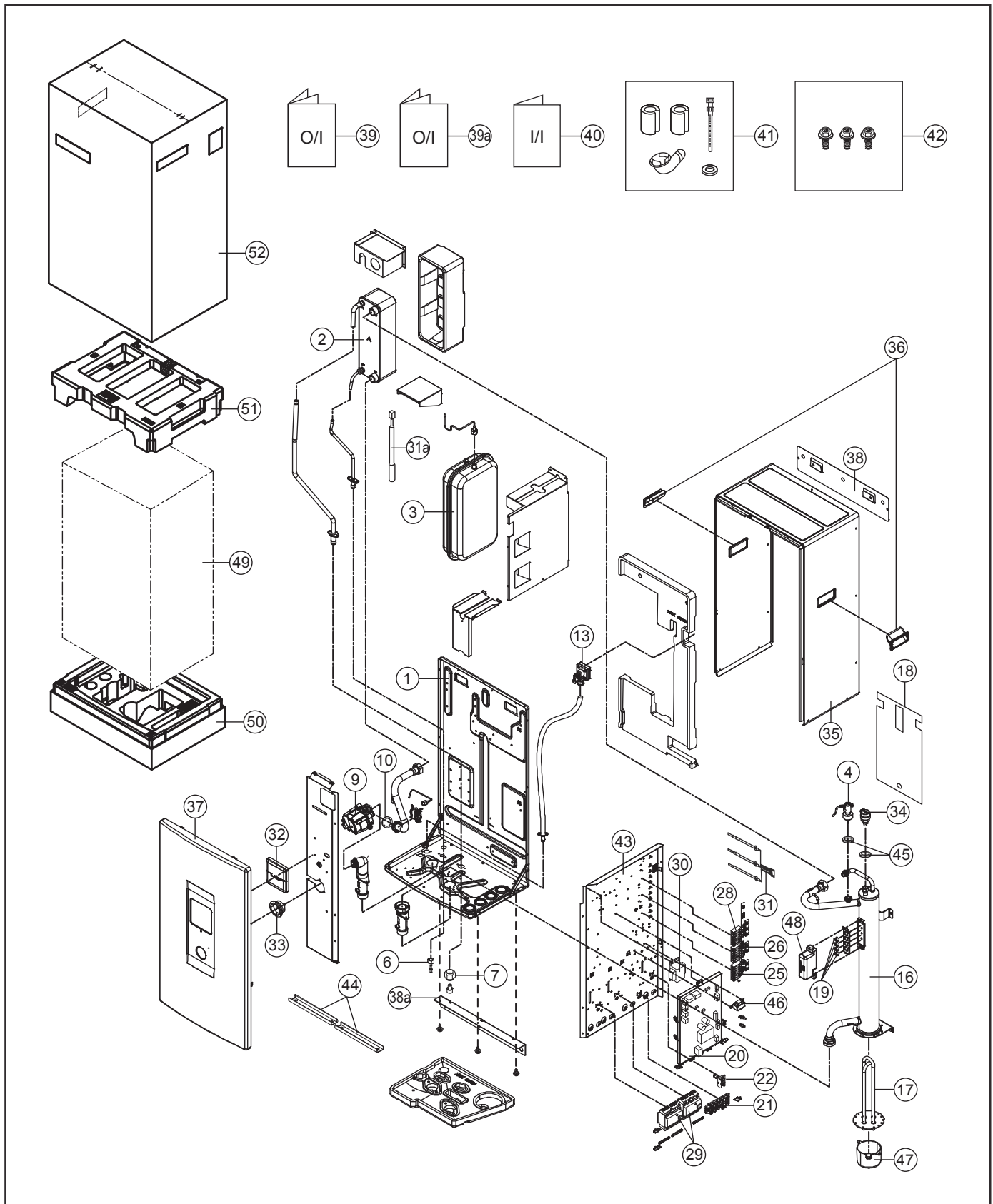


19. Exploded View and Replacement Parts List

19.1 Indoor Unit



Note:

- The above exploded view is for the purpose of parts disassembly and replacement.
- The non-numbered parts are not kept as standard service parts.

<Model: WH-SXC16F9E8>

SAFETY	REF. NO.	DESCRIPTION & NAME	QTY.	WH-SXC16F9E8	REMARK
	1	BASE PAN	1	CWD521279	O
	2	HOT WATER COIL - COMPLETE	1	CWB90C1108	
	3	RECEIVER	1	CWB141039	
	4	FLOW SWITCH	1	CWB621128	O
	6	FLARE NUT(3/8)	1	CWT251061	
	7	FLARE NUT (5/8)	1	CWT251064	
	9	WATER PUMP	1	CWB532116	O
	10	PACKING (O-RING) I.D 32MM	1	CWB811082	
	13	PRESSURE RELIEF VALVE	1	CWB621092	O
	16	BOTTLE COMP.	1	CWH90C0045	
	17	HEATER ASS'Y	1	CWA34K1030	O
	18	SOUND PROOF MATERIAL	1	CWG302853	
	19	THERMOSTAT	4	CWA151074	
⚠	20	ELECTRONIC CONTROLLER - MAIN	1	CWA73C8047	O
⚠	21	TERMINAL BOARD ASS'Y (TO OUTDOOR)	1	CWA28K1240	O
⚠	22	TERMINAL BOARD ASS'Y (A)	1	CWA28K1236	O
⚠	25	TERMINAL BOARD ASS'Y (2 & 3 WAY VALVE)	1	CWA28K1229	O
⚠	26	TERMINAL BOARD ASS'Y (HEATER & THERMOSTAT)	1	CWA28K1230	O
⚠	28	TERMINAL BOARD ASS'Y (TANK)	1	CWA28K1231	O
	29	CIRCUIT BREAKER	2	CWA181008	O
	30	TRANSFORMER COMPLETE	1	CWA40C1096	O
	31	SENSOR - COMPLETE (CN-TH1)	1	CWA50C2762	O
	31a	SENSOR - COMPLETE (CN-TH3)	1	CWA50C3164	O
⚠	32	REMOTE CONTROL COMPLETE	1	CWA75C4331	O
	33	PRESSURE GAUGE	1	CWB070001	O
	34	AIR PURGE VALVE	1	CWB621094	
	35	CABINET	1	CWE001050A	
	36	HANDLE	2	CWE161008	
	37	CABINET FRONT PLATE	1	CWE061265A	
	38	INSTALLING HOLDER	1	CWH361103A	
	38a	INSTALLING HOLDER	1	CWH361119A	
	39	OPERATING INSTRUCTION	1	CWF569597	
	39a	OPERATING INSTRUCTION	1	CWF569598	
	40	INSTALLATION INSTRUCTION	1	CWF615946	
	41	ACCESSORY - COMPLETE (DRAIN ELBOW)	1	CWH82C1763	
	42	ACCESSORY - COMPLETE	1	CWH82C1754	
	43	CONTROL BOARD	1	CWH102409	
	44	CONNECTING BAR	2	CWE261147	
	45	PACKING	2	CWB811190	
⚠	46	REACTOR	1	G0C103Z00003	O
	47	TERMINAL COVER	1	CWH171052	
	48	TERMINAL COVER	1	CWH171051	
	49	BAG	1	CWG861447	
	50	BASE BOARD - COMPLETE	1	CWG62C1124	
	51	SHOCK ABSORBER	1	CWG713189	
	52	C.C.CASE	1	CWG568364	

Note:

- All parts are supplied from PAPAMY, Malaysia (Vendor Code: 00029488).
- "O" marked parts are recommended to be kept in stock.