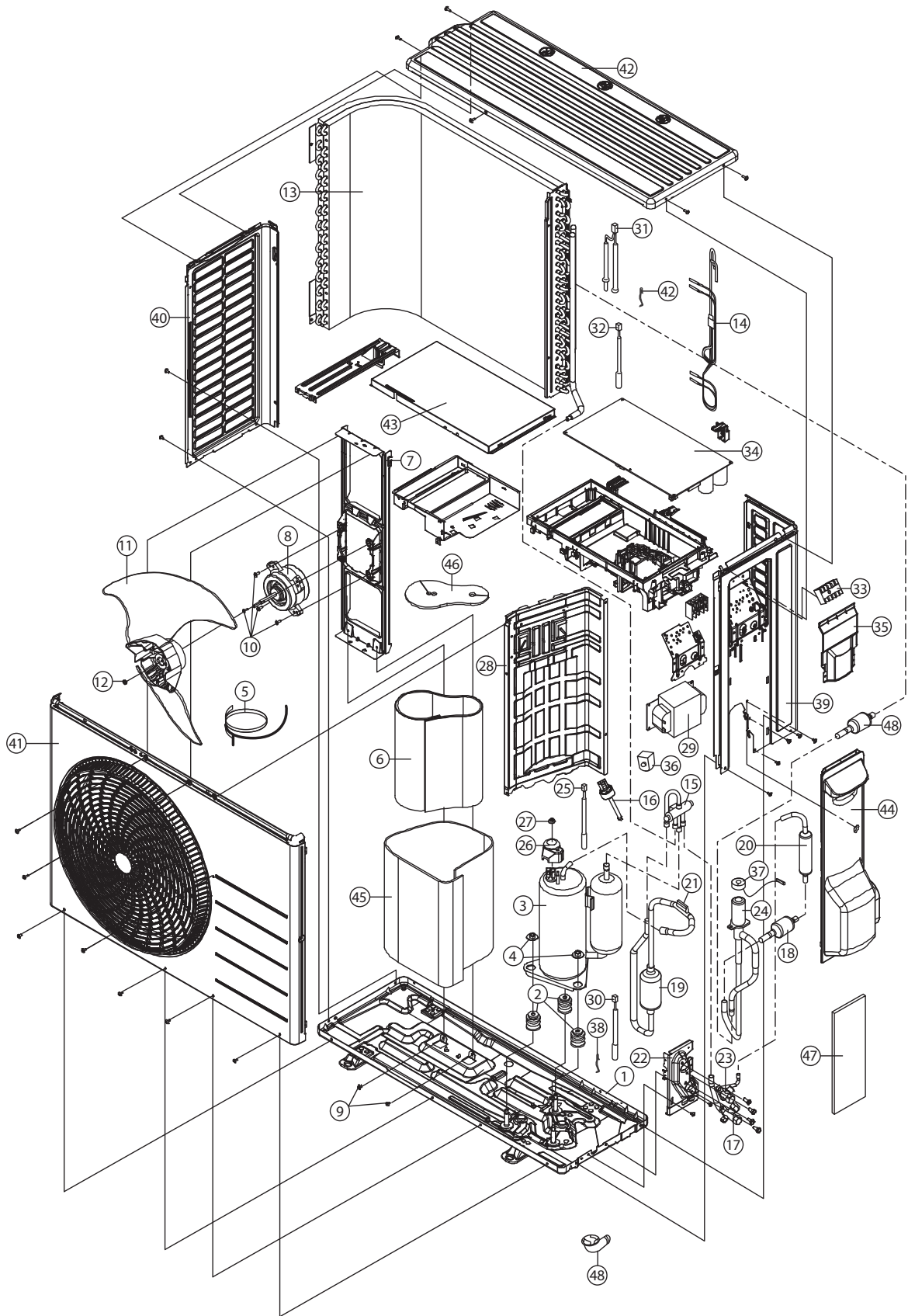


20.2 Outdoor Unit

20.2.1 WH-UD03HE5-1 WH-UD05HE5-1



Note:
The above exploded view is for the purpose of parts disassembly and replacement.
The non-numbered parts are not kept as standard service parts.

<Model: WH-UD03HE5-1 WH-UD05HE5-1>

SAFETY	REF. NO.	DESCRIPTION & NAME	QTY.	WH-UD03HE5-1	WH-UD05HE5-1	REMARK
	1	CHASSY ASS'Y	1	CWD52K1317	←	
	2	ANTI - VIBRATION BUSHING	3	CWH50077	←	
	3	COMPRESSOR	1	5RD132XBE21	←	O
	4	NUT - COMPRESSOR MOUNT	3	CWH561096	←	
	5	CRANKCASE HEATER	1	CWA341044	←	
	6	SOUND PROOF MATERIAL	1	CWG302762	←	
	7	BRACKET FAN MOTOR	1	CWD541167	←	
	8	FAN MOTOR, DC 40W 3PH	1	ARS6411AC	←	O
	9	SCREW - BRACKET FAN MOTOR	2	CWH551217	←	
	10	SCREW - FAN MOTOR MOUNT	4	CWH55252J	←	
	11	PROPELLER FAN ASSY	1	CWH03K1066	←	
	12	NUT - PROPELLER FAN	1	CWH56053J	←	
	13	CONDENSER COMPLETE	1	CWB32C4240	←	
	14	MANIFOLD TUBE ASS'Y (CAP TUBE)	1	CWT07K1831	←	
	15	4 - WAYS VALVE	1	CWB001063	←	
	16	HIGH PRESSURE SENSOR CN-HPS	1	CWA501463	←	O
	17	3 - WAYS VALVE	1	CWB011670	←	
	18	STRAINER	2	CWB11094	←	
	19	DISCHARGE MUFFLER (1)	1	CWB121065	←	
	20	DISCHARGE MUFFLER (2)	1	CWB121063	←	
	21	HOLDER - SENSOR	1	CWH32075	←	
	22	HOLDER - COUPLING	1	CWH351233	←	
	23	2 - WAYS VALVE	1	CWB021606	←	
	24	EXPANSION VALVE	1	CWB051016J	←	O
	25	SENSOR - CO. (DISCHARGE TEMP CN-DIS)	1	CWA50C2656	←	O
	26	TERMINAL COVER	1	CWH171039A	←	
	27	NUT - TERMINAL COVER	1	CWH7080300J	←	
	28	SOUND - PROOF BOARD	1	CWH151345	←	
	29	REACTOR	1	G0C193J00016	←	O
	30	SENSOR - CO. (COMPRESSOR TEMP CN-TANK)	1	CWA50C2894	←	O
	31	SENSOR - CO. (OUTDDOR AIR & PIPING TEMP CN-TH1)	1	CWA50C2893	←	O
	32	SENSOR - CO. (EVA EXIT TEMP CN-TH3)	1	CWA50C3374	←	
	33	TERMINAL BOARD ASS'Y (1, 2, 3)	1	CWA28K1036J	←	O
	34	ELECTRONIC CONTROLLER - MAIN	1	ACXA73C07710R	ACXA73C07720R	O
	35	PLATE - C. B. COVER	1	CWH131470	←	
	36	V - COIL COMP. (4 WAY VALVE)	1	CWA43C2431	←	O
	37	V - COIL CO. (EXPANSION VALVE)	1	ACXA43C00460	←	O
	38	HOLDER - SENSOR	3	CWH32143	←	

SAFETY	REF. NO.	DESCRIPTION & NAME	QTY.	WH-UD03HE5-1	WH-UD05HE5-1	REMARK
	39	CABINET SIDE PLATE CO.	1	ACXE04C00280	←	
	40	CABINET SIDE PLATE (L)	1	CWE041616A	←	
	41	CABINET FRONT PLATE - CO.	1	ACXE06C00010	←	
	42	CABINET TOP PLATE	1	CWE031148A	←	
	43	CONTROL BOARD COVER	1	CWH131473	←	
	44	CONTROL BOARD COVER - COMPLETE	1	CWH13C1253	←	
	45	SOUND PROOF MATERIAL (COMP - BODY)	1	ACXG30-00020	←	
	46	SOUND PROOF MATERIAL (COMP - TOP)	1	CWG302630	←	
	47	SOUND PROOF MATERIAL (530 mm × 180 mm)	1	CWG302788	←	
	48	ACCESSORY COMP. (DRAIN ELBOW)	1	CWG87C900	←	

Note:

- All parts are supplied from PAPAMY, Malaysia (Vendor Code: 00029488).
- "O" marked parts are recommended to be kept in stock.